



FLANGE MOUNTED TRANSDUCERS (FMT)



FMT 2 N-m

4	FMT
50671.xxx*	0.04 - 2 N-m ¼" sq. dr. with Joint Simulator
50672.xxx	0.5 - 10 N-m ¼" sq. dr. with Joint Simulator
50673.xxx	1.25 - 25 N-m ¼" + ⅜" sq. dr. with Joint Simulator
50677.xxx*	0.4 - 20 lbf-in ¼" sq. dr. with Joint Simulator
50678.xxx	5 - 100 lbf-in ¼" sq. dr. with Joint Simulator
50679.xxx	12.5 - 250 lbf-in ¼" + ⅜" sq. dr. with Joint Simulator

4	FMT
50844.xxx	3 - 60 N-m ½" + ⅜" sq. dr. with Joint Simulator
50674.xxx	7.5 - 150 N-m ½" + ⅜" sq. dr. with Joint Simulator
50680.xxx	5 - 100 lbf-in ½" + ⅜" sq. dr. with Joint Simulator
50675.xxx	20 - 400 N-m ½" + ¾" sq. dr.
50681.xxx	12.5 - 250 lbf-ft ½" + ¾" sq. dr.

4	FMT
50676.xxx	30 - 1,500 N-m ½", ¾" + 1" sq. dr.
50682.xxx	20 - 1,000 lbf-ft ½", ¾" + 1" sq. dr.
TD1.CCW	Counter-clockwise calibration for FMT & STB when ordered with new unit

xxx Indicates .LOG or .IND versions, please see page 88.
 * If using this transducer with a Series 1 TST or TTT (Part No.s 43198 - 43201) or a Pro-Log Display instrument, please contact Norbar.
 Includes integral transducer lead with connector to suit TST, TTT and T-Box™ 2



FMT 400 N-m

FMT 1,500 N-m

Model	FMT (2 N-m - 25 N-m)	FMT (60 N-m - 400 N-m)	FMT (1,500 N-m)
Part Number	50671.xxx 50672.xxx 50673.xxx 50677.xxx 50678.xxx 50679.xxx	50844.xxx 50674.xxx 50680.xxx 50675.xxx 50681.xxx	50676.xxx 50682.xxx
Dimensions (mm)	ØA	5.5	8.5
	ØB	64	90
	C	63	65
Weight (kg)	0.8 (2 N-m & 20 lbf-in) 0.8 (10 N-m & 100 lbf-in) 0.9 (25 N-m & 250 lbf-in)	3.3 (60 N-m, 150 N-m & 100 lbf-ft) 1.5 (400 N-m) 2.7 (250 lbf-ft)	7.0

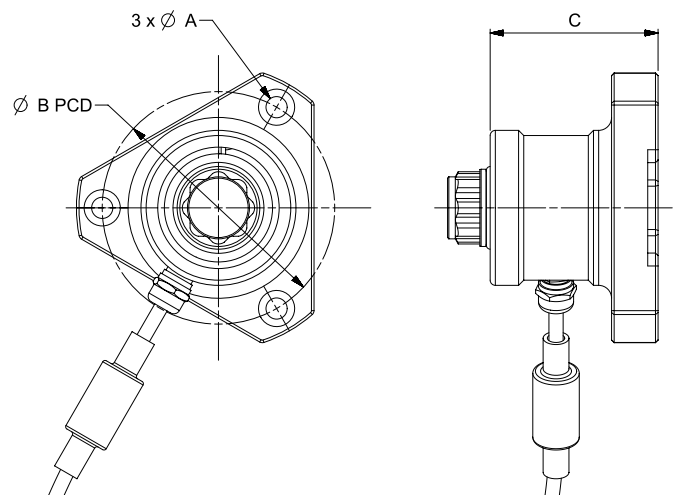
Flange Mounted Transducers (FMT) incorporate mounting points for securely fixing the transducer to the working surface. The transducer lead is also included and is fitted with a high quality connector, suitable for attachment to TST, TTT and T-Box™ 2 instruments.

4	FMT (Ancillary Section)
50539	2 N-m Joint Simulator (also fits TST)
50540	10 N-m Joint Simulator (also fits TST)
50541	25 N-m Joint Simulator (also fits TST)
50845	60 N-m Joint Simulator
50692	150 N-m Joint Simulator
50819	400 N-m Joint Simulator
52236	¼" Hexagon - ¼" Square Drive Adaptor
52237	¼" Hexagon - ⅜" Square Drive Adaptor
52251	⅜" Female Square - 22 mm Bi-Square Adaptor
52246	½" Female Square - 22 mm Bi-Square Adaptor
52245	¾" Female Square - 22 mm Bi-Square Adaptor
52254	½" Female Square - 35 mm Bi-Square Adaptor
52241	¾" Female Square - 35 mm Bi-Square Adaptor
52242	1" Female Square - 35 mm Bi-Square Adaptor



FMT Mounting Brackets

4	FMT Mounting Brackets
62221.BLK9005	FMT Mounting Bracket 2 - 400 N-m
62220.BLK9005	FMT Mounting Bracket 150 - 1,500 N-m





TORQUE TOOL TESTER (TTT)



The Torque Tool Tester (TTT) shares all of the extensive features of the Torque Screwdriver Tester (TST) except that it has no internal transducer. Instead, the TTT offers not one but three external transducer interfaces allowing any three transducers to be simultaneously connected. Selection between the transducers is made by a rotary switch at the back of the instrument case.

Any transducer from Norbar’s Smart range and most mV/V calibrated transducers from Norbar or other manufacturers can be connected to the TTT. The Smart feature means that once a transducer has been connected, the instrument will automatically recognise calibration details such as mV/V output, serial number and capacity.

- Pictorial display panel for easy mode selection
- Limit detection with low, pass and fail indication. Up to 12 target values can be set
- Digital limit state output for control of external tools
- Operation from fast charge internal battery pack (maximum time of 3 hours 20 minutes for full charge) or a.c. supply (90 to 264 Volts)
- RS-232-C serial data interface for connection to a printer or PC. Continuous RS-232 output when used in Track mode (up to 11 readings per second)
- Pulse count feature in Impulse mode and Clutch Tool mode
- Smart intelligence for transducer recognition, now displays transducer capacity, units and Serial Number
- Memory for calibration details of 20 non-Smart mV/V calibrated transducers
- Analogue output allows the instrument to be used as part of a process control system for performance analysis
- User-selectable frequency response for each mode of operation
- All user-selectable features have password protection. The instrument can be issued to users with only the required modes of operation and units of measure enabled. This feature can virtually eliminate operator induced errors
- Peak memory modes can now be configured to have auto reset (previously only manual reset was possible)
- Series 3 users can set up their own measurement units, making it possible to interface with non-torque transducers, for example load or pressure



4	TTT SERIES 3
43228	TTT Instrument
TTT.CCW	Counter-clockwise calibration when ordered with new unit
Above TTT part number excludes Transducer leads (see page 98)	



Model	All Models	
Part Number	43228	
Dimensions (mm)	A	152
	B	181
	C	200
Weight (kg)	4.8	

